

BRISTOL ROVERS

FOOTBALL CLUB LTD (Founded 1883)

FOOTBALL LEAGUE—THIRD DIVISION



Nº 7088

Official Programme 6d

BRISTOL ROVERS

v.

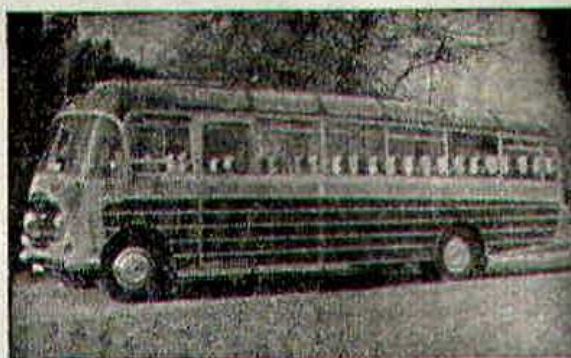
SWINDON TOWN

TUESDAY, SEPTEMBER 7th, 1965 Kick-off 7.30 p.m.

BRISTOL STADIUM · EASTVILLE

Follow the
ROVERS

example and
travel with



WEMS

LUXURY COACHES

NORTH VIEW, BRISTOL, 6

Telephone: 36441

A FLEET OF LUXURY COACHES AVAILABLE FOR
FOOTBALL, SKITTLE MATCHES, OUTINGS, etc.

FLOWERS

ADD CHARM TO ANY OCCASION



WEDDING FLOWERS

FLORAL TRIBUTES



FLOWERS SENT ANYWHERE



HOME OR ABROAD

NITE TEL. 65-3394

ROGER ET CIE

LTD

746 FISHPONDS ROAD

Tel. 65-2365

AND BRANCHES

BRISTOL ROVERS FOOTBALL CLUB LTD.

President: HIS GRACE THE DUKE OF BEAUFORT, K.G., P.C., G.C.V.O.

Directors:

P. W. HORT (Chairman); H. E. L. BROWN; J. P. HARE;
D. MEARNs MILNE; D. SIMPSON; C. A. L. STEVENS; G. W. VAUGHAN.
Manager: B. J. TANN. **Secretary:** R. A. MOULES.

Medical Officer:

Dr. W. T. CUSSEN, M.B., Ch.B., B.A.O.

Trainer: W. MCARTHUR.

Coach: R. CAMPBELL.

ROVERS HAVE TO CATCH UP ON SWINDON

BY MAURICE GOLESWORTHY

Having parted company with the City this evening's game is THE local derby of the season and we extend a special welcome to our friends and neighbours from Swindon.

This will be our 55th Football League meeting with the Wiltshire club and as things stand at the moment the Rovers have a little catching up to do, for the present tally reads Rovers 21 wins, Town 24 wins, and nine games drawn. Despite that tally, however, the Rovers are slightly ahead as far as goals are concerned for we have netted 75 to Swindon's 73.

While Rovers have succeeded in winning only four of our 27 League games at Swindon, the Town have won seven times on this ground, but only one of their victories has been gained in a post-war match.

Oddly enough this solitary post-war Swindon win at Eastville was in Rovers' promotion season, at a time when we were seven points clear of everyone at the head of the table and Swindon were one place off the bottom and struggling to avoid having to apply for re-election.

Bristol City were runners-up to Rovers at that late stage of season 1952-53 (it was at the beginning of April) but a week before their visit to Eastville, Swindon had held City to a goalless draw at the County Ground.

However, when Rovers went to Swindon on the following Friday (Good Friday) we won 3-1 and it seemed like an easy "double" for us in the return game on Easter Monday. It was certainly one of the shocks of the day when the Railwaymen grabbed both points with a 2-1 victory.

Incidentally, that was the only time since the war that Swindon have succeeded in netting more than one goal at Eastville, for so well have Rovers sustained their ground advantage that the Town have failed to score at all in five of their eight post-war League visits.

Swindon, of course, are now in the process of reshaping their team and getting it back on the winning trail after being so hard hit in the Second Division last season. Indeed, so involved are they in transfer talks at the present time that even though I have left it until the last moment to write these notes we still cannot be sure whether we shall see goalscoring inside-forward, Ernie Hunt, or whether they will include any more new signings.

Manager Danny Williams has already spent quite a slice of the £30,000 or more that the Town are presumed to have received for Mike Summerbee (I wonder

what Bristol City thought about that fee for a player who was once on their ground-staff!) by signing Pete Downsborough from Halifax Town, Ken Keyworth from Coventry City, and Mel Nurse from Middlesbrough. No doubt Swindon will not stop there, especially when they collect another fat fee for Ernie Hunt's transfer—a deal that may be completed with either Villa or Wolves by the time this appears in print.

Until taking over at Swindon, Manager Danny Williams was a one club man for he had served Rotherham (his home town) for 23 years as player, coach, and finally as manager. Obviously, he must be a man who likes a challenge for he knew that he had a real job on his hands when he accepted the managership of Swindon only a month or so after they had suffered relegation.

Mr. Williams signed a 'townie' and former team mate when he paid Coventry City £5,000 for Ken Keyworth. Indeed, Ken was given his first-ever League appearance because of an injury to Danny Williams then playing left-half. Ken has since switched to the attack and made two Cup Final appearances during the time he was with Leicester City.

Swindon swapped Bill Atkins and a £3,000 cheque for goalkeeper Pete Downsborough from Halifax, and centre-half, Mel Nurse, is reported to have cost them £15,000 from Middlesbrough. Mel has a dozen Welsh International appearances to his credit.

But turning to League appearances Swindon's John Trollope is the player with the most remarkable record. Assuming he escaped injury on Saturday this could be his 226th CONSECUTIVE League game. He has never been dropped since making his debut in August 1960.



Ernie Hunt
(Swindon Town)



Mel Nurse
(Swindon Town)

SUPPORTERS' ACTIVITIES

1. THE PIRATES

We are again planning to hold a series of soccer film shows and talks during the winter months at about monthly intervals.

The first function will be on Monday, 20th September. A football film will be shown. The meeting will take place in the North Stand Lounge, commencing at 7.30 p.m. Admission will be by membership card only, but we will of course extend a very warm welcome to new members.

GORDON BENNETT, *Chairman.*

2. SUPPORT FUND SOCIETY

ANOTHER SATURDAY JACKPOT WINNER !



MRS. WILLMOT—Kingswood, Bristol, was the winner of our £100 Saturday Jackpot.

BUY YOUR 1/- TICKET TONIGHT !

TRUE BLUE AND YOU

The "True Blue" Organisation is intended to band together the true supporters of Bristol Rovers' F.C.

The vital thing to a Football Club is support and in joining the "True Blues" you not only give vital help to the Club but you have the opportunity to enjoy the facilities of organised travel and social activities.

Cheap travel is arranged for all away games, plus the chance to win a free stand seat. (Book TONIGHT for the match at York on Friday evening).

Film shows, socials and dances will be held regularly.

Rural members are encouraged to form branches and they will receive 100% assistance in organising their social activities.

THE 19" BLEND

Rediffusion's elegant new 19" set is fully switchable to 625-line programmes. No aerials needed. Specially designed for Rediffusion's own wired television system, this set costs much less than an aerial set. You simply switch on to enjoy a perfect picture free from fading or local interference.

PRESENT PROGRAMME SERVICE

TWW, Westward, BBC TV plus 3 radio programmes (including Luxembourg) all from one set. BBC 2 available September 12th, 1965.

PART EXCHANGE

Your old television set taken in part exchange when you buy or rent a new receiver.

MAINTENANCE SERVICE

Operates up to 10.0 p.m. every day, including Bank Holidays.

Regional Office:
2/3 BROAD PLAIN,
BRISTOL 2
Tel.: Bristol 23332

BRISTOL

2/3 Broad Plain Tel. 23332
6 Merchant St. Tel. 24606
63 Gloucester Rd. Tel. 49045

SHOWROOMS AT:—

156 White
4 Filwood
High St.,

BRISTOL ROVERS
 Colours: Blue and White

R

HILLARD (2)

OLDFIELD (4)

JARMAN (7) BROWN (8)

Referee:
Mr. A. R. C. Weller
(Bromley, Kent)

ROGERS (11) BROWN (10)

ATHERTON (6)

L

HALL

DAVIS (5)

BIGGS (9) HAMILTON

*Substitute—*MUNRO

TOOCOODS
OF BRISTOL
GARAGES :: SHEDS,
HOME EXPANSIONS, Etc.
Show Site:—
 Winterstoke Road, Ashton Gate

*Substitute—*SMART

KEYWORTH (9)

NURSE (5)

TROLLOPE (3)

DOWNSBOROUGH

SWINDON TOWN

Get set for 625 with

REDIFFUSION

BLENNHEIM 405/625

BRISTOL ROVERS

Colours: Blue and White

L

HALL

2)

JONES, G. (3)

DAVIS (5)

MABBUTT (6)

8

BIGGS (9) HAMILTON (10) JONES, R. (11)

Substitute—MUNRO

TOOGOODS
OF BRISTOL

GARAGES :: SHEDS,
HOME EXPANSIONS, Etc.

Show Site:—
Winterstoke Road, Ashton Gate

Linesmen:

Mr. T. Jenkins
(Newport)
(Yellow Flag)

Mr. R. J. Edwardes
(Malpas)
(Red Flag)

Substitute—SMART

(10) KEYWORTH (9) HUNT (8) WEAVER (7)

NURSE (5) MORGAN (4)

PE (3)

DAWSON (2)

DOWNSBOROUGH

R

SWINDON TOWN

SHOWROOMS AT:—

Tel. 23332
Tel. 24606
Tel. 49045

156 Whiteladies Rd. Tel. 33442
4 Filwood Broadway..... Tel. 66486
High St., Shirehampton.. Opening Shortly

ALSO AT:—

EXETER, EXMOUTH, PLYMOUTH,
SOUTHAMPTON, PENZANCE,
PAIGNTON.

REDIFFUSION

wired vision service

An allocation of Cup Final and International tickets will be made available and, of course, first call on any tickets for Bristol Rovers' games.

JOIN NOW — YOU WON'T REGRET IT.

All enquiries please to:—

E. T. OSBORNE,
EASTVILLE (BRISTOL) STADIUM,
BRISTOL, 5.

or at:—

"TRUE BLUE" OFFICE,
(MAIN GATE ENTRANCE),
EASTVILLE (BRISTOL) STADIUM,
BRISTOL, 5.

open daily 9.00 a.m. to 5.00 p.m. and from 7.30 p.m. to 9.30 p.m. on Thursdays and Fridays.

PROGRAMME PRIZES

Three programme numbers will be announced at half-time, for cash prizes as under:—

1st Prize £5 2nd Prize £3 3rd Prize £2
CHECK YOUR NUMBER — FRONT PAGE.

Prizewinners, Match v. Brentford

£5 — P. Terry, Sweets Road, Kingswood.
£3 — A. Sheppard, Wesley Road, Southmead.
£2 — Unclaimed (Programme 2056).

THE BRISTOL ROVERS POLICY

The Club Policy was printed in full in the first two issues of this season's Programme. As announced, we shall be using subsequent programmes to amplify each section of the policy and to explain how it is or should be put into practice.

SECTION 1.

No doubt the term "No buy, no sell" is the tag most frequently applied to Bristol Rovers. That does not, however, sum up fully the policy of the Club. We are concerned with promoting football. We are making haste slowly. There is unbounded enthusiasm amongst the Directors. The results of that enthusiasm have already been made clear. We are not out to win at any price. We do believe that successful football must be a matter of team work. Team work amongst our players, team work amongst our Directors and Officials, team work amongst our supporters and even team work amongst the public who pay to see our matches.

FLEXIBILITY AND RIGIDITY

Although the Policy is flexible we stick to it as rigidly as we can—if only to make everyone connected with the Club Policy-minded—encouraging them to understand that good scouting and recruitment of young players, followed by good training and coaching coupled with fostering and nurturing, will lead to success. This is making haste slowly.

DEVIATION

When the maximum wage clause was removed from players' contracts four years ago, creating difficult problems in wage negotiations with some players, we deviated from certain aspects of the policy for a period of two years, to meet the special needs of the time. But in broad principle we have stuck as closely as possible to the policy since 1950.

When needs arise, mature and experienced players are also recruited—but we do our best to discourage this method, believing that home grown products are as good as, if not better, than imports.

At the same time we recognise and pay tribute to the great service we have

received from players who have come to Eastville from all over the U.K. Indeed it is gratifying that so many of them have settled in Bristol at the end of their playing days.

DIRECTORS

The Directors do not seek personal publicity, and it is not easy for the public to perceive the enthusiasm of Directors. This reveals itself in the Board Room, by their never failing encouragement of players and staff, and by the many years of service contributed by most of them—regardless of the thankless nature of their office.

THE WAY TO WIN

We are not out to win at any price—those who are, usually are desperate. Doubtful methods and dubious practices are discouraged. We believe that having set a course it should be pursued, and that if all concerned have faith in the common purpose we shall succeed.

TEAMWORK

The need for teamwork is obvious, particularly amongst our players, directors and officials—and we are working towards this all the time.

Much has been done to encourage teamwork amongst our supporters, at Club level and particularly through the medium of the late supporters club. It is unfortunate that it became necessary to dispense with this medium.

The way ahead is in the Family Tree of Support. Teamwork amongst our supporters with our Directors and officials through the various branches of the Family Tree will lead to a greater understanding and ultimate success.

Those really concerned with the success of Bristol Rovers have a positive part to play, and the pattern needs to be understood, and if we are to succeed, accepted. Under the umbrella of the Football Club:—

The Player's duty is to play, and dedicate himself.

The Director's duty is to Direct, without interference.

The Management's duty is to Manage.

The Fund-raiser's duty is to raise funds.

The Supporter's duty is to support.

It is only by everyone appreciating and accepting this formula that we can progress. In this day and age Football Clubs cannot afford Supporting Organisations unless they are **completely** behind the Board, Management and Players. Any other approach is futile and will be doomed to failure—as was proved in the case of our late supporters club.

THE PUBLIC WHO PAY

Tremendous strides have been made in improving every aspect of the Club since the war. Facilities and amenities for the public who pay to see our matches have developed out of all knowledge since the pre-war era. Progress continues, and it is our hope that as we progress we shall create a climate in which the public who pay to see our matches will become supporters and will want to be identified with Bristol Rovers in the way that our closest supporters are identified.

"THE PIRATE RADIO"

If you would like a record played before the next match please send your request to the "Pirate Radio", Eastville Stadium.

Today's records kindly loaned by The Record Shop, 6 Colston St., Bristol, 1.

**THE FIRST AID COVERING AT ALL MATCHES IS MAINTAINED
BY THE MEMBERS OF THE ST. JOHN AMBULANCE BRIGADE—
THE SERVICES BEING ENTIRELY VOLUNTARY.**

**A FULL-LENGTH COMMENTARY ON THIS AND ALL OTHER
ROVERS' HOME GAMES IS RELAYED TO 24 HOSPITALS BY
"HOSPITAL BROADCASTS."**

These fixtures are the copyright of the Football League Ltd. and are printed by their permission under Licence. They must not be reproduced in whole or in part without permission from the Football League Ltd.

Date 1965	Opponents	Ground
AUG. 21	GRIMSBY TOWN ..	A 1-1
" 24	SHREWSBURY TOWN ..	H 3-2
" 28	BRENTFORD ..	H 1-1
SEPT. 4	MANSFIELD TOWN ..	A 0-2
" 7	SWINDON TOWN ..	H
" 10	YORK CITY ..	A
" 18	OXFORD UNITED ..	H
" 25	SWANSEA TOWN ..	A
" 28	WORKINGTON ..	H
OCT. 2	WALSALL ..	H
" 5	SWINDON TOWN ..	A
" 9	BRIGHTON & HOVE ..	H
" 16	SCUNTHORPE UTD. ..	A
" 19	OLDHAM ATHLETIC ..	H
" 23	WATFORD ..	H
" 25	MILLWALL ..	A
" 30	OLDHAM ATHLETIC ..	A
NOV. 1	SHREWSBURY TOWN ..	A
" 6	GILLINGHAM ..	H
" 13	F.A. Cup (Round 1)	
" 20	PETERBOROUGH UTD. ..	H
" 27	EXETER CITY ..	A
DEC. 4	F.A. Cup (Round 2)	
" 11	HULL CITY ..	A
" 18	SCUNTHORPE UTD. ..	H
" 27	BOURNEMOUTH ..	H
" 28	BOURNEMOUTH ..	A
1966		
JAN. 1	BRIGHTON & HOVE ..	A
" 8	MILLWALL ..	H
" 15	WATFORD ..	A
JAN. 22	F.A. Cup (Round 3)	
" 29	GRIMSBY TOWN ..	H
FEB. 5	BRENTFORD ..	A
" 12	(4) SOUTHEND UTD. ..	A
" 19	MANSFIELD TOWN ..	H
" 26	YORK CITY ..	H
MAR. 5	(5) SOUTHEND UTD. ..	H
" 12	OXFORD UNITED ..	A
" 19	SWANSEA TOWN ..	H
" 26	(6) WALSALL ..	A
APRIL 2	GILLINGHAM ..	A
" 8	QUEEN'S PARK RANG. ..	A
" 9	READING ..	H
" 12	QUEEN'S PARK RANG. ..	H
" 16	PETERBOROUGH UTD. ..	A
" 23	(S.F.) EXETER CITY ..	H
" 26	WORKINGTON ..	A
" 29	READING ..	A
MAY 6	HULL CITY ..	H
" 14	(F.A. Cup Final)	

Date 1965	Opponents	Ground
AUG. 21	SOUTHEND UNITED ..	H 3-3
" 28	LUTON TOWN ..	A 3-2
" 31	LEYTON ORIENT ..	H 3-0
SEPT. 4	BRENTFORD ..	H 1-1
" 11	BIRMINGHAM CITY ..	A
" 15	OXFORD UNITED ..	A
" 21	BIRMINGHAM CITY ..	H
" 25	NOTTS COUNTY ..	H
OCT. 2	CHARLTON ATHLETIC ..	A
" 4	MILLWALL ..	A
" 16	READING ..	H
" 23	GILLINGHAM ..	A
" 30	COLCHESTER UNITED ..	H
NOV. 6	WATFORD ..	A
" 13	BRIGHTON & HOVE ..	H
" 20	QUEEN'S PARK RANG. ..	A
" 27	MANSFIELD TOWN ..	H
DEC. 4	BRISTOL CITY ..	A
" 11	MILLWALL ..	H
" 15	READING ..	A
" 28	OXFORD UNITED ..	H
1966		
JAN. 1	GILLINGHAM ..	H
" 8	COLCHESTER UNITED ..	A
" 15	WATFORD ..	H
" 29	SOUTHEND UNITED ..	A
FEB. 5	LUTON TOWN ..	H
" 12	ALDERSHOT ..	H
" 19	BRENTFORD ..	A
MAR. 5	ALDERSHOT ..	A
" 9	LEYTON ORIENT ..	A
" 19	NOTTS COUNTY ..	A
" 26	CHARLTON ATHLETIC ..	H
APRIL 2	QUEEN'S PARK RANG. ..	H
" 9	BRIGHTON & HOVE ..	A
" 11	BOURNEMOUTH ..	A
" 16	BRISTOL CITY ..	H
" 23	MANSFIELD TOWN ..	A
" 30	BOURNEMOUTH ..	H

NOTE—Figures in brackets refer to Rounds in the F.A. Cup.

BRISTOL STADIUM (Eastville)

Greyhound Racing
at this STADIUM
EVERY WEDNESDAY
AND SATURDAY

AT 7.30 P.M.

USUAL ATTRACTIVE PROGRAMME

BEFORE AND AFTER THE GAME MEET YOUR FRIENDS AT

THE WHITE SWAN HOTEL

Corner Robertson Road, Eastville.

LOUNGE SMOKE ROOM, PUBLIC BAR
CLUB ROOMS FOR MEETINGS, WEDDINGS ETC.
BED AND BREAKFAST — DOUBLE & SINGLE ROOMS
(Hot and cold water all rooms)

Telephone:- Bristol 56187

Just 500 yards from the Rovers' Ground

WILLIAM BURROW LTD.

Eastville's Popular Price Man's Shop

441 Stapleton Road, Bristol, 5.

For your Raincoats — Shirts — Trousers
Sportsjackets — Suits — Socks — Caps etc.

AT EASTVILLE

NEXT SATURDAY — 3 o'clock
(BRISTOL PREMIER COMBINATION, DIV. 1)

ROVERS "A" TEAM v.
MOUNT HILL ENTERPRISE

SATURDAY, SEPTEMBER 18th
(LEAGUE, DIV. 3)
Kick-off 3.0 p.m.

OXFORD UTD.

STAND TICKETS

Stand tickets may be booked in
advance for all home games:—

PRICES

	Adults	Juveniles (only if booked)
NORTH STAND ..	8/6	4/6
SOUTH STAND ..	7/6	4/-

DOUBLE DIAMOND

AND

SKOL

International Lager

In Bottle and on Draught

IND COOPE DRAUGHT and BOTTLED BEERS

**ALWAYS OBTAINABLE IN THE BARS
THROUGHOUT THE STADIUM**